



p a r t n e r s   f o r   a   s u s t a i n a b l e   f u t u r e





are a multidisciplinary engineering firm with a track record for excellence in our practice.

Established in 1994, HMR Consultants is an ISO 9001:2000 firm with its head offices in Muscat, Oman. HMR Consultants are a registered service provider with The World Bank; International Finance Corporation; UNEP (ROWA) and other leading national and international corporations and banks.

With over a decade of experience in the MENA region our focus is client driven. We believe in sharing our knowledge and working in partnership with our clients to develop innovative cost effective solutions that address our clients needs. Our dedicated team of professionals is committed to working as individuals or as part of a multidisciplinary team while defining solutions of high technical integrity and commercial viability.

HMR Consultants are sensitive to their responsibility to the community and continue to promote social entrepreneurship and sustainability. This ethos is embedded in all aspects of our operational and commercial activities.

## m i s s i o n

"We aim to define innovative, sustainable and commercially viable solutions that address our clients' needs and comply with international best practices."

## v i s i o n

"To consistently produce deliverables of high quality and technical integrity as your preferred partner for a sustainable future."

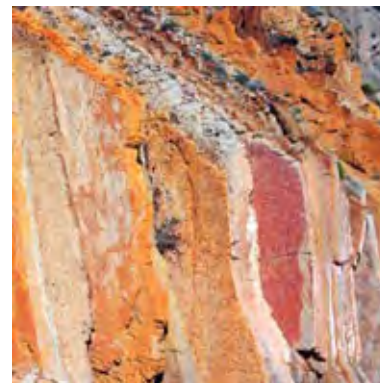




renewable energy  
&  
carbon footprint

feasibility  
&  
planning studies

risk assessment  
&  
management



corporate  
&  
government advisory



environmental  
&  
social assessments

p a r t n e r s   f o r   a   s u s t a i n a b l e   f u t u r e

## CORPORATE & GOVERNMENT ADVISORY SERVICES

Since its inception, HMR has provided technical advisory services to both the Government and the private sectors on various aspects pertaining to groundwater protection and waste management, environmental planning and wastewater treatment & re-use. We conduct environmental advisory and feasibility studies that include consideration of site sensitivities and utility infrastructure at the master planning stage. HMR maintains a multi disciplinary team comprising of urban/environmental planners, ecologists, engineers, hydrogeologists, modelers, waste management experts, and sustainability and socio-economists to support development sectors at various stages of project planning and implementation.

## FEASIBILITY & PLANNING

A well planned development takes into consideration a myriad of factors involving a multi-disciplinary team of experts to provide inputs such that environmental, coastal, marine, socio-economic, cultural, landuse, ecological, economical, architectural, infrastructure, transportation, utilities and resources. HMR with its team of professional associates are fully qualified and capable of undertaking urban, regional, local and strategic planning studies for various sectors of development. Our team that includes planners, architects, engineers, coastal experts, environmental specialists, socio-economic specialists, GIS experts and infrastructure and utility engineers can deliver a whole range of services pertaining to planning and feasibility studies

## RISK ASSESSMENT & MANAGEMENT

We maintain in-house expertise & software tools to determine risk levels as part of engineering studies for acceptability of proposed master plans, controls & safeguard mechanisms of facilities, industries, upstream and downstream oil and gas developments. We provide various safety services including HAZID, HAZOP, SIL, QRA and management studies.





## ENVIRONMENT & SOCIAL ASSESSMENT

Organizations and businesses are becoming increasingly more concerned with their environmental and social responsibility. This can be applied across all industries, as financial institutions are also sensitive about the environmental and social impacts of the projects they are financing. HMR has extensive experience in conducting environmental and social impact assessments in accordance with various local legislations and international guidelines, such as the Equator Principles, which are used as a benchmark by many institutions for managing environmental and social issues. Our approach ensures the engagement of all stakeholders and a rational step by step assessment of their concerns related to the implementation of a new project. Social management plans are developed to reflect the expectations and interests of both the promoter and the community.

## RENEWABLE ENERGY & CARBON FOOTPRINT

HMR uses an integrated approach to deliver climate change services in mitigation, adaptation, trading and offsets. Our team works with organisations to identify and understand the strategic risks and opportunities presented by climate change. This includes consideration of emerging legislative frameworks, investor-reporting requirements, new markets looking for carbon solutions and the direct physical impacts of projected climate change. We work with clients to measure, reduce, verify and report greenhouse gas emissions. This includes implementation of energy efficiency, fuel switching and renewable energy into new and existing projects. We understand the importance of taking early action and positioning organisations to manage and respond to climate change risks and impacts. We provide risk management services and integrate climate change conditions into project design and delivery. Our strategy and technical advisors deliver comprehensive climate change, energy and greenhouse gas management services to enable efficient and sustainable business practices.







coastal process  
&  
management studies

audits  
&  
monitoring

surveys  
&  
investigations



industrial  
&  
municipal waste  
management



procurement  
&  
planning

p a r t n e r s   f o r   a   s u s t a i n a b l e   f u t u r e

## COASTAL PROCESSES & MANAGEMENT STUDIES

Providing a comprehensive range of services to investigate and define coastal and shoreline processes, to assess the likely impacts of potential developments and to develop rational solutions using best engineering practices to address the impacts. Our services include coastal studies and managing surveys such as bathymetry, sand search and oceanography. We closely work with reputed institutes for numerical modeling of environmental processes, sediment transport, wind and waves, hydrodynamics, sediment transport and shoreline evolution

## SURVEYS & INVESTIGATIONS

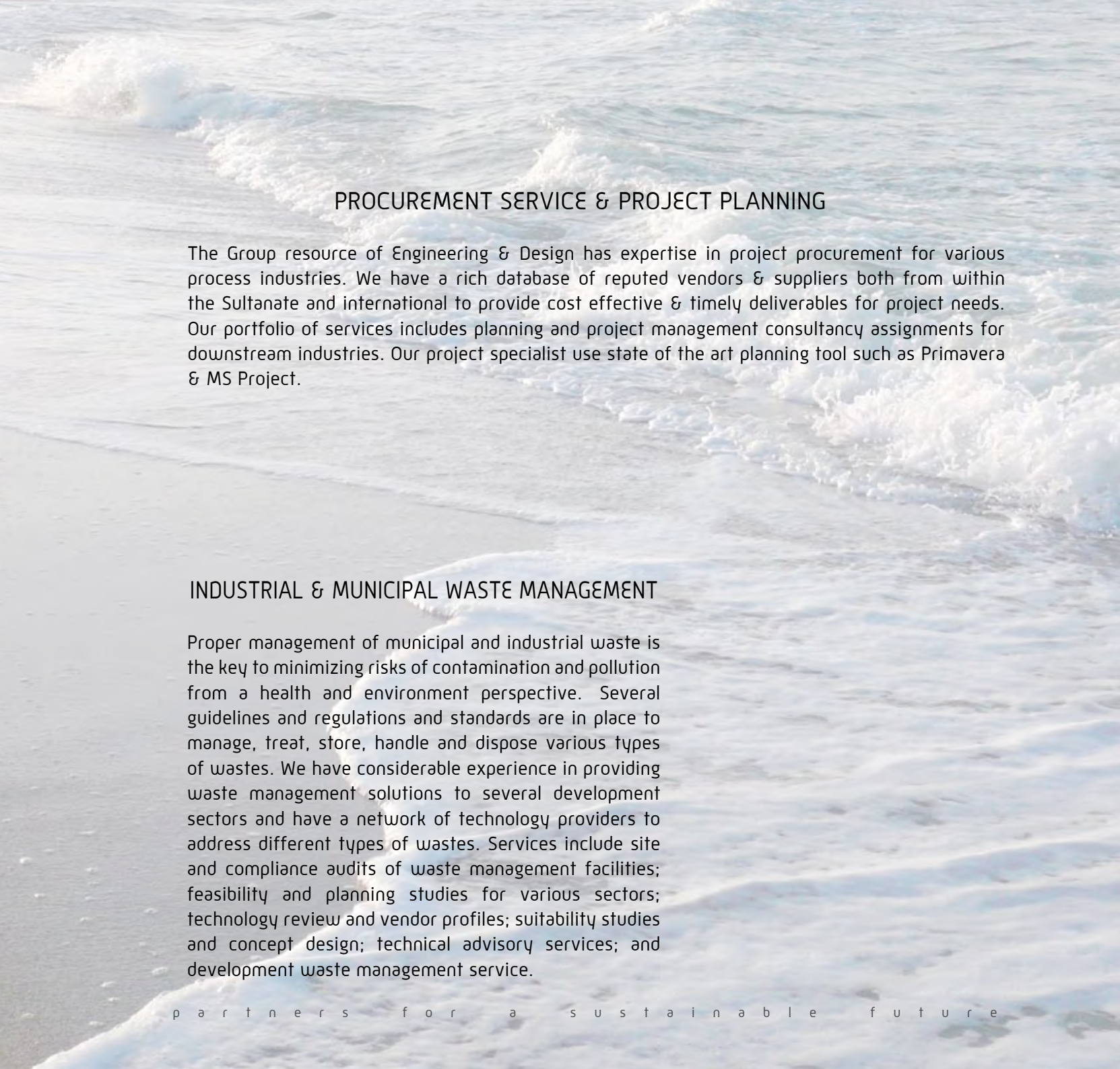
Geological and natural resources surveys to support land use planning and optimal allocation of resources. We conduct detailed hydrogeological studies and investigations to quantify and define both surface and subsurface water resources; this includes soil and water analyses and ground water modeling of complex water resource systems. Sustainable resources management and planning are supported by adopting a holistic approach which includes a review and understanding of traditional water rights, use and value to the community. Our approach is defined by focusing on our efforts on objectives of the study and directing the survey to consider all stakeholders to meet both short and long term needs and often conflicting priorities and time lines.

## AUDIT & MONITORING

Comprehensive abilities to undertake audits on the guide line of ISO 14001. Compliance assessment with local environmental legislation and regulations. Comprehensive environmental site assessment. Preparation-Initiation of environmental management systems including site specific environmental management plans, Emergency response procedures, and Health and safety guidelines. Monitoring of ambient air quality, stack emissions, workplace and ambient noise levels, sampling and analysis of soil, groundwater, marine sediments and sea water. Recommending corrective action and propose suitable remediation plans.







## PROCUREMENT SERVICE & PROJECT PLANNING

The Group resource of Engineering & Design has expertise in project procurement for various process industries. We have a rich database of reputed vendors & suppliers both from within the Sultanate and international to provide cost effective & timely deliverables for project needs. Our portfolio of services includes planning and project management consultancy assignments for downstream industries. Our project specialist use state of the art planning tool such as Primavera & MS Project.

## INDUSTRIAL & MUNICIPAL WASTE MANAGEMENT

Proper management of municipal and industrial waste is the key to minimizing risks of contamination and pollution from a health and environment perspective. Several guidelines and regulations and standards are in place to manage, treat, store, handle and dispose various types of wastes. We have considerable experience in providing waste management solutions to several development sectors and have a network of technology providers to address different types of wastes. Services include site and compliance audits of waste management facilities; feasibility and planning studies for various sectors; technology review and vendor profiles; suitability studies and concept design; technical advisory services; and development waste management service.





front-end  
&  
detailed engineering

design  
&  
architectural services

construction  
&  
site supervision

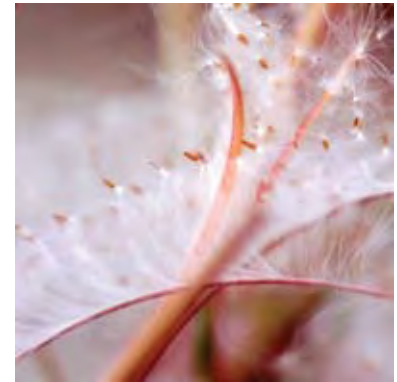


image processing  
&  
gis



application development  
&  
it solutions

p a r t n e r s   f o r   a   s u s t a i n a b l e   f u t u r e

## IMAGE INTERPRETATION & GIS MAPPING

Preparation of land use & land cover from the satellite imageries. Extraction of base map features from the aerial photographs such as roads, villages, buildings and utilities. Geo-database design & development along with utility mapping such as water, electricity, sewage and other pipeline networks. GIS mapping and application development for planning and analysis along with mobile mapping using high accuracy DGPS hand held devices. Data migration from hard copy to GIS printable layout format; which involves scanning, digitizing in CAD, conversion to GIS format.

## APPLICATION DEVELOPMENT & IT SOLUTIONS

We design, develop and maintain enterprise solutions, using world-class methodology, for business-to-business and business-to-consumer applications. These applications are built to leverage emerging and classic communication channels. We offer services that range from defining business needs to building solutions using best-of-breed tools and technologies to maintain applications. With our right skills and processes, we can help manage complex IT infrastructures. Reliable service delivery is assured with ITIL frameworks, ensuring availability and performance of servers, applications, networks, and databases.

## FRONT END & DETAILED ENGINEERING

The group's capabilities include developing concept designs for oil & gas, petrochemicals, industrial chemicals and manufacturing facilities by sourcing licensors basic package. Upon conducting project feasibility & selection of licensor's package, we can perform residual engineering on balance-of-plant along with detailed engineering towards developing tenders for EPC and/or PMC packages. Frequently, our group is engaged on design-build contracts up to commissioning & plant handover on account of our experience, track record and multi-disciplinary skills in engineering, procurement & overall project management.





A 3D architectural rendering of a modern building with a central courtyard. The building features white facades, large glass windows, and a flat roof. The courtyard is paved with grey tiles and has a low wall around its perimeter. The overall style is clean and minimalist.

## CONSTRUCTION SUPERVISION & PROJECT MANAGEMENT SERVICES

In our practice, we have recognized the importance of closely integrated team work and co-ordination between the planners, designers and technical experts. With this in mind, we maintain a multidisciplinary design engineering consultancy team complimented by strong architectural and project management expertise. To enable a comprehensive suite of services, we provide project management, site supervision & quality surveying support to key clients to fulfill the project brief and developer's aspirations in seeing the project through its construction lifecycle & defects liability period

## DESIGN SERVICES

We are committed to continuous improvement of our services and design quality through the development of a culture of excellence. Our aim is to make a positive contribution to the quality of the built environment and to create places which enrich people's lives. We create the best architectural design solutions from our offices across the globe. We provide international expertise with innate knowledge and understanding of local cultures. Our designers are committed to contribute and lead in the societies we design for. Our holistic approach to sustainability demonstrates our sensitivity not only to the built environment but also for the people we work with and the societies we live and work within. We provide consultancy services in architecture, interior design, landscape, structural designing and all types of electro-mechanical utilities through our head office in the Middle East and branches in India, UK and Australia.

## **U A E**

P.O. Box 126385, Dubai, UAE  
Tel: +971 4 3289577  
Fax: +971 4 3289578  
E-mail: hmrenvco@eim.ae

## **O M A N**

P.O. Box 1295, CPO Seeb  
PC 111, Sultanate of Oman  
Tel: +968 24618800, Fax: +968 24618811  
E-mail: hmrenv@omantel.net.om

## **U S A**

2111 Wilson Boulevard, Suite 700  
Arlington 22201 Va  
Tel: +703 351 5000  
Fax: +703 351 9292



[www.hmrenv.com](http://www.hmrenv.com)